

Transfer Files between a vEdge and vManage

Contents

[Introduction](#)

[Prerequisites](#)

[Requirements](#)

[Components Used](#)

[Background Information](#)

[Copy a File From a vEdge Through vManage CLI](#)

[Option 1. Viptela CLI](#)

[Option 2. vShell CLI](#)

[Verify](#)

[Send a File to a vEdge Through vManage CLI](#)

[Option 1. Viptela CLI](#)

[Option 2. vShell CLI](#)

[Verify](#)

[Copy a File from vManage to Local Computer](#)

[Option 1. Linux/Mac Terminal](#)

[Option 2. FileZilla or Any Other FTP or SFTP Client](#)

[Related Information](#)

Introduction

This document describes how to transfer files between a remote vEdge and a local vManage through CLI.

Contributed by Eric Garcia Guzman, Cisco TAC Engineer.

Prerequisites

Requirements

Cisco recommends that you have knowledge of these topics:

- Cisco Software-defined Wide Area Network (SD-WAN)
- Basic Linux

Components Used

This document is based on these software and hardware versions:

- vEdge version 20.3.6
- vManage version 20.5.1

The information in this document was created from the devices in a specific lab environment. All of

the devices used in this document started with a cleared (default) configuration. If your network is live, ensure that you understand the potential impact of any command.

Background Information

You can transfer files between a remote vEdge and a local vManage through CLI in two ways:

- Retrieve files from a remote vEdge to a local vManage file system
- Push files from vManage to vEdge through vManage CLI

In order to transfer the files from one location to another becomes a difficult task. The most common reasons are these:

- vEdge file system is not accessible from the outside
- No FTP/TFTP/SFTP is available or reachable
- No physical access to the router to copy files directly to a USB or massive storage

However, the SD-WAN solution provides the ability to use control connections to secure copy files between the vManage and a remote vEdge.

The transfer can be done from the home directory of the vEdge to the local user home directory in vManage or vice-versa. Examples of files are:

- Admin-tech
- Cisco Viptela® OS images
- Logs
- Packet captures
- Txt files

vManage runs the Viptela OS and has 2 modes in CLI:

- Viptela CLI: contains all Viptela functionality
- vShell: UNIX shell in the device

Copy a File From a vEdge Through vManage CLI

Note: In this section, all commands are issued from vManage to retrieve files from a remote vEdge to vManage local directory.

Option 1. Viptela CLI

Command syntax:

The command is read as, **use Secure Copy Protocol** in VPN 0 to **retrieve source_file_name** from **vEdgeSystemIP** into **destination_directory_in_vManage** with vEdge's username.

```
request execute vpn 0 scp USERNAME@vEdgeSystemIP: /<source_file_name>  
<destination_directory_in_vManage>
```

Example:

Connect to vManage CLI and run the Viptela request execute the command in VPN 0 along with Secure Copy Protocol (SCP) command to start the copy.

```
vmanage# request execute vpn 0 scp admin@192.168.10.1:/home/admin/vEdge-20211229-023316-admin-tech.tar.gz /home/admin/
The authenticity of host '[192.168.10.1]:830 ([192.168.10.1]:830)' can't be established.
RSA key fingerprint is SHA256:R8KekCx/giwjCqR5woDm+sodjF5kvU7QxnUexoElxAw.
Are you sure you want to continue connecting (yes/no/[fingerprint])? yes
Warning: Permanently added '[192.168.10.1]:830' (RSA) to the list of known hosts.
admin@192.168.10.1's password:
vEdge-20211229-023316-admin-tech.tar.gz 100% 13MB 4.8MB/s 00:02
```

Option 2. vShell CLI

Example:

Connect to vManage CLI, change mode to vShell and run the SCP command in Linux format.

```
vmanage# vshell
vmanage:~$ scp admin@192.168.10.1:/home/admin/vEdge-20211229-023316-admin-tech.tar.gz
/home/ericgar/
Viptela 20.5.1
admin@192.168.10.1's password:
vEdge-20211229-023316-admin-tech.tar.gz 100% 13MB 4.7MB/s 00:02
```

Verify

Change mode from Viptela CLI to vShell in vManage and verify that the file is copied correctly.

```
vmanage# vshell
vmanage:~$ ls -l
total 12976
-rw----- 1 ericgar users 13285905 Dec 29 21:21 vEdge-20211229-023316-admin-tech.tar.gz
```

Send a File to a vEdge Through vManage CLI

Note: In this section, all commands are issued from vManage to send files from vManage local directory to a remote vEdge storage.

Command syntax:

The command is read as, use **Secure Copy Protocol** in VPN 0 to **copy source_file_name** into **/home/admin/** at **vEdgeSystemIP** with username.

```
request execute vpn 0 scp <source_file_name> username@vEdgeSystemIP:/home/admin/
```

Option 1. Viptela CLI

Example:

Connect to vManage CLI and run the Viptela request execute the command in VPN 0 along with SCP syntax to start the copy.

```
vmanage# request execute vpn 0 scp /home/ericgar/packet_capture_vEdge.pcap
admin@192.168.10.1:/home/admin/
admin@192.168.10.1's password:
packet_capture_vEdge.pcap 100% 13MB 3.8MB/s 00:03
```

Option 2. vShell CLI

Example:

Connect to vManage CLI, change the mode to vShell and run the SCP copy in Linux format.

```
vmanage# vshell
vmanage:~$ scp /home/ericgar/packet_capture_vEdge.pcap admin@192.168.10.1:/home/admin/
Viptela 20.5.1
admin@192.168.10.1's password:
packet_capture_vEdge.pcap 100% 13MB 3.8MB/s 00:03
```

Verify

Connect to the vEdge CLI and display the content of **/home/admin/** to verify the file is copied correctly:

```
vEdge# vshell
vEdge:~$ ls -l
total 166444
-rw-r--r-- 1 admin admin13285905 Dec 29 16:45 packet_capture_vEdge.pcap
```

Note: The destination directory in the vEdge must always be **the user home directory**, since that is the only directory that has to write permissions for transfers, otherwise, the transfer fails.

```
vmanage# request execute vpn 0 scp /home/ericgar/packet_capture_vEdge.pcap
admin@192.168.10.1:/home/root/
Viptela 20.5.1
Password:
scp: /home/root/packet_capture_vEdge.pcap: Permission denied
```

Copy a File from vManage to Local Computer

Option 1. Linux/Mac Terminal

Command syntax:

The command is read as: **copy source_file_name** from **vManage** into **local_destination_path** with vManage username.

```
scp vManageUsername@PublicIp:<source_file_name> <local_destination_path>
```

Example:

Connect to your local Linux/Mac terminal and run the SCP command to copy the file to your desired directory.

```

adminIT@cisco:~$ scp admin@10.88.244.25:/home/admin/packet_capture_vEdge.pcap
/Users/adminIT/Downloads/
viptela 20.5.1
Password:
packet_capture_vEdge.pcap 100% 13MB 3.6MB/s

```

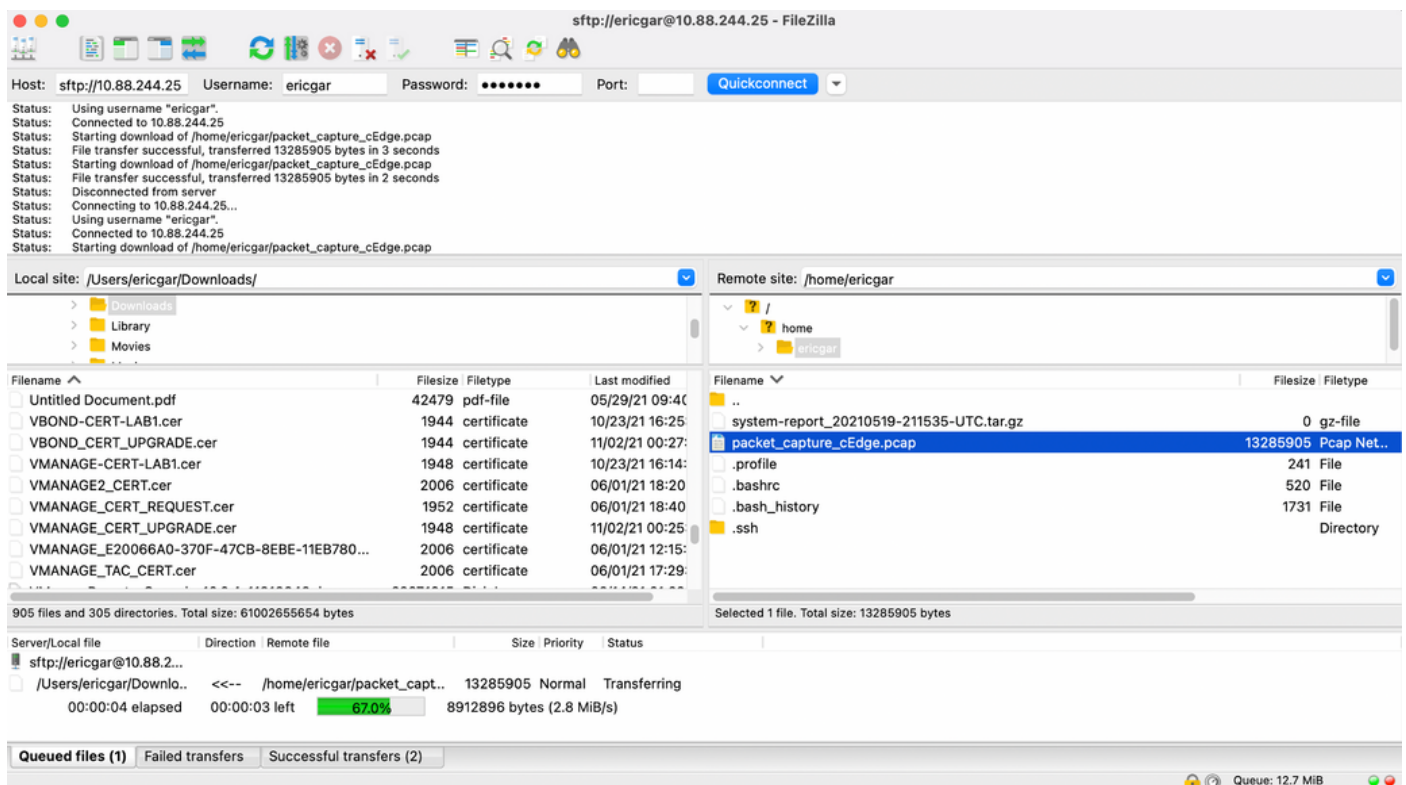
Note: It is recommended that the file to fetch is in the user home directory, otherwise, the directory permissions need to be verified.

Option 2. FileZilla or Any Other FTP or SFTP Client

Connect with:

- SFTP as protocol or port 22
- vManage URL, Public IP or Private IP (If vManage is On-Prem)
- Use valid username and password

On the right, the files in the vManage user home directory are listed, just drag and drop to the local destination on the left where you want to transfer the file, as shown in the image.



Related Information

- [Transfer Files between a cEdge and vManage](#)
- [Technical Support & Documentation - Cisco Systems](#)