

# Configure APP Console Access for Cisco IOx

## Contents

[Introduction](#)

[Prerequisites](#)

[Requirements](#)

[Components Used](#)

[Configure](#)

[Verify](#)

[Troubleshoot](#)

## Introduction

This document describes how to configure APP console access for Cisco IOx. To have access without a password to Guest OS (GOS), appconsole access needs to be setup for the keys which are already provided on Cisco IOx Local Manager.

## Prerequisites

### Requirements

Cisco recommends that you have knowledge of these topics:

- IOx need to be installed; <http://www.cisco.com/c/en/us/td/docs/routers/access/800/829/software/configuration/guide/IR800config/guest-os.html>
- Installed APP; [http://www.cisco.com/c/en/us/td/docs/routers/access/800/software/guides/iox/fog-director/reference-guide/1-2-0/fog\\_director\\_ref\\_guide/apps\\_page.html#78926](http://www.cisco.com/c/en/us/td/docs/routers/access/800/software/guides/iox/fog-director/reference-guide/1-2-0/fog_director_ref_guide/apps_page.html#78926)

### Components Used

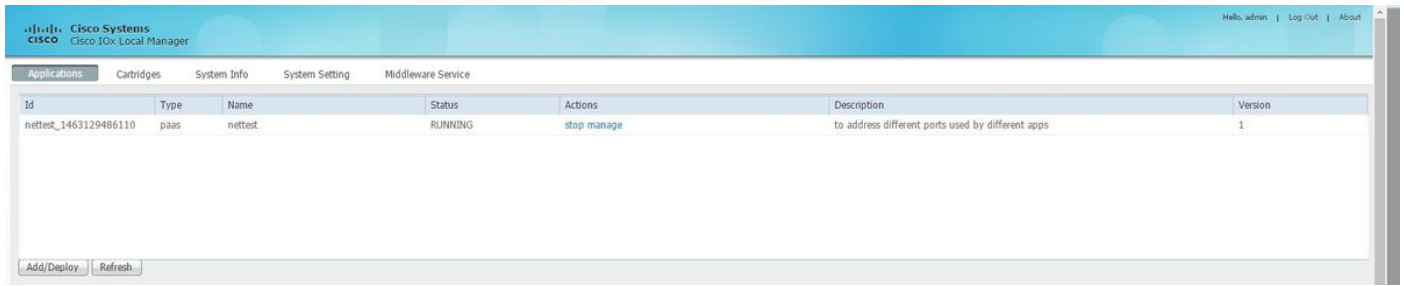
The information in this document is based on these software and hardware versions:

- IOx Local Manager
- Windown Client PC
- putty.exe
- puttygen.exe

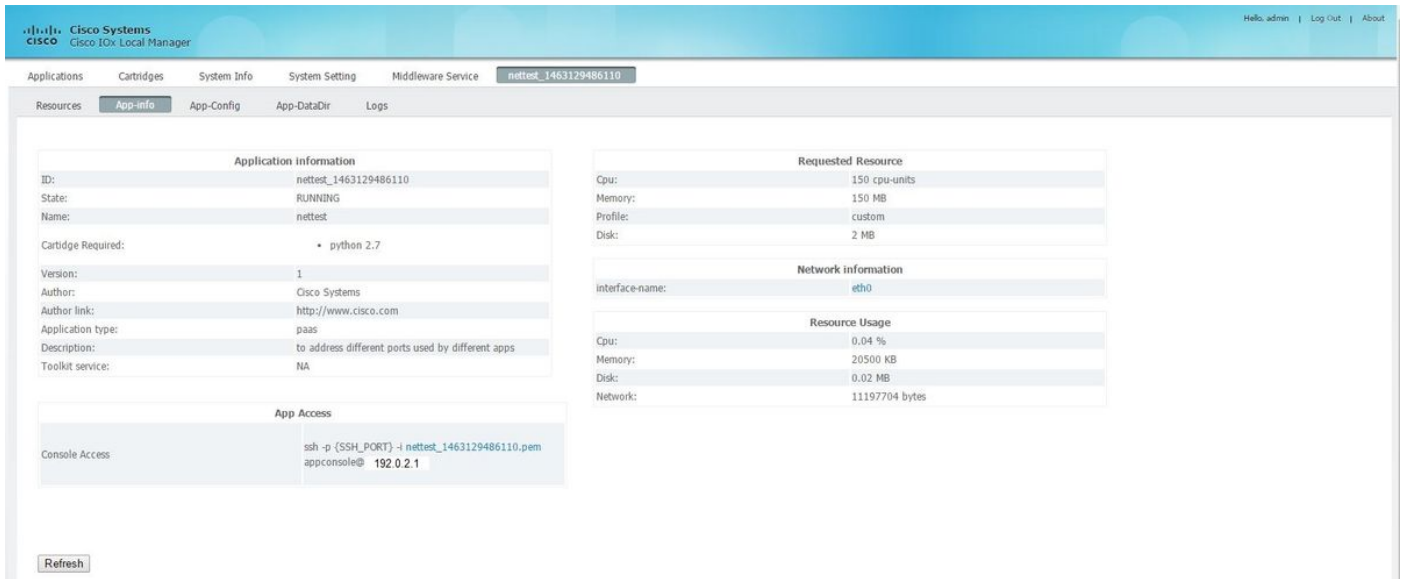
The information in this document was created from the devices in a specific lab environment. All of the devices used in this document started with a cleared (default) configuration. If your network is live, make sure that you understand the potential impact of any command.

## Configure

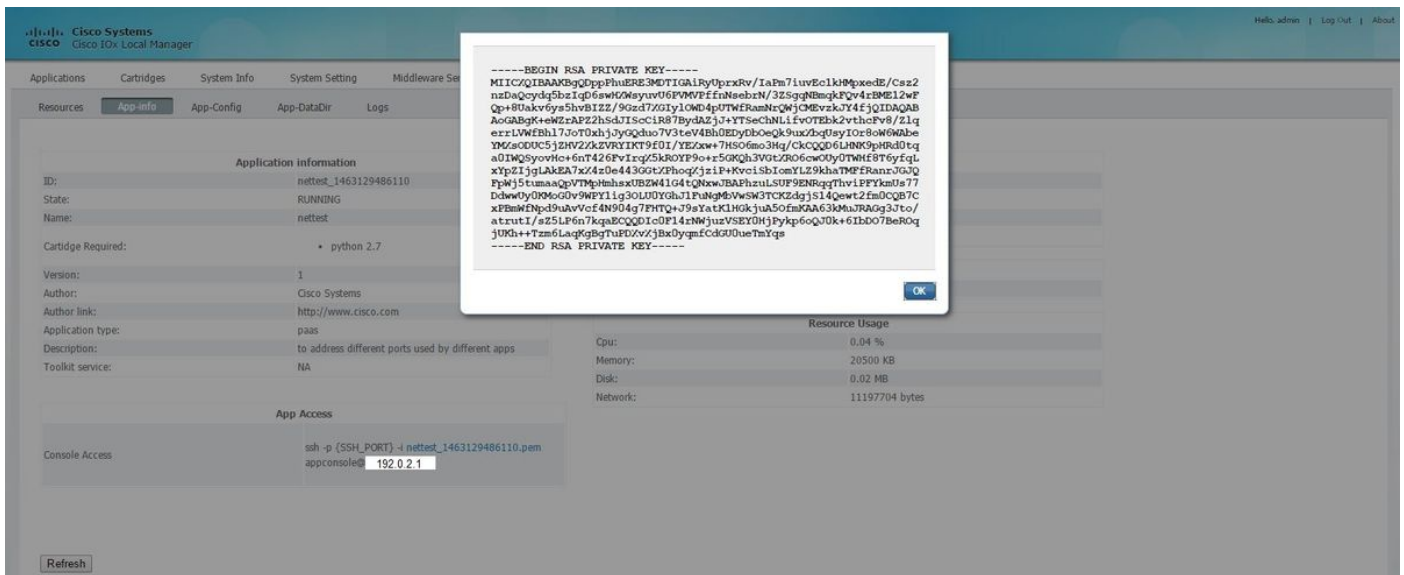
1. From Admin page of the APP mangment click **Manage**.



2. Click on the **Tab App-info**.

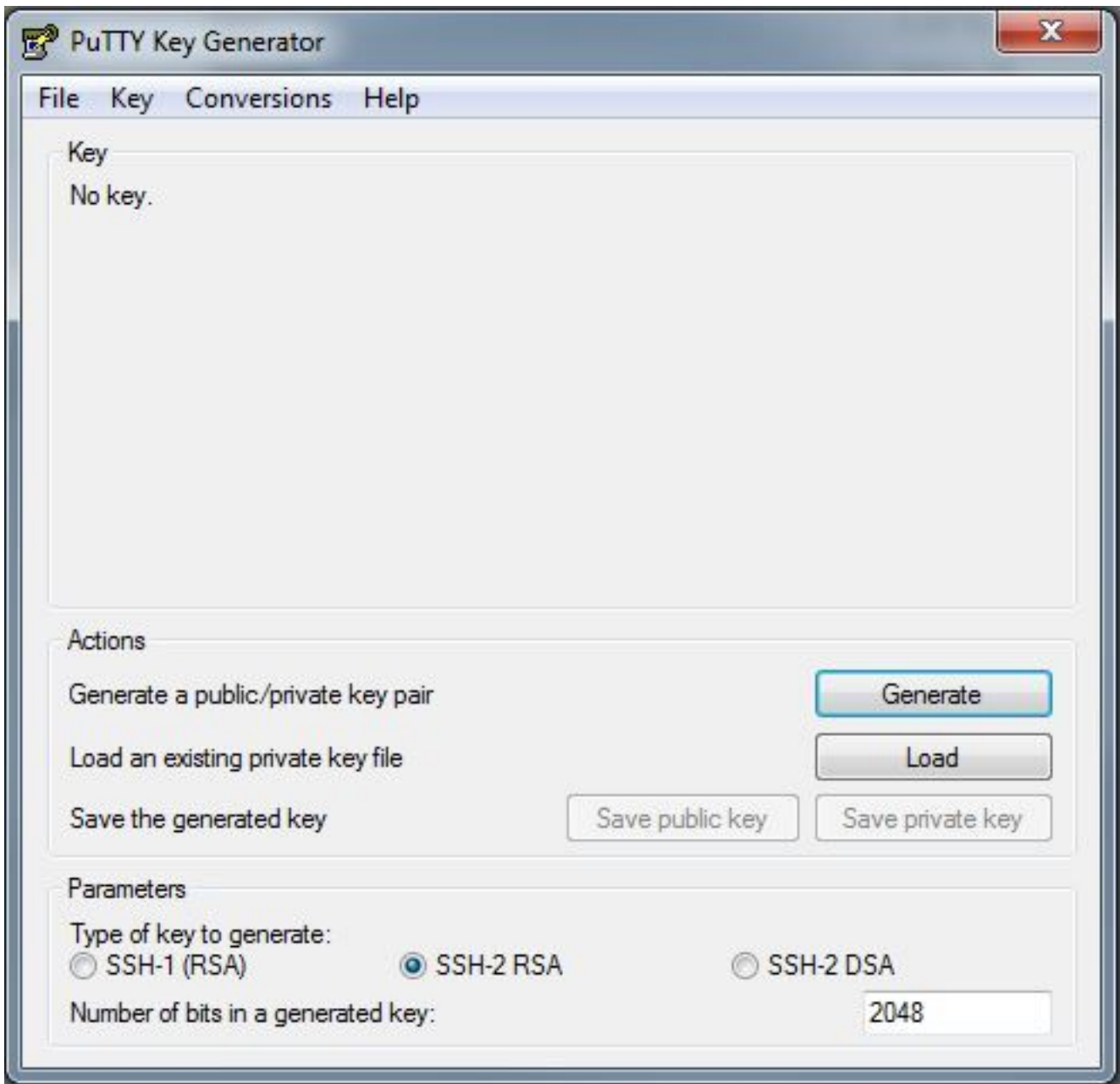


3. Click on **.pem** file for pvt key to show in browser.

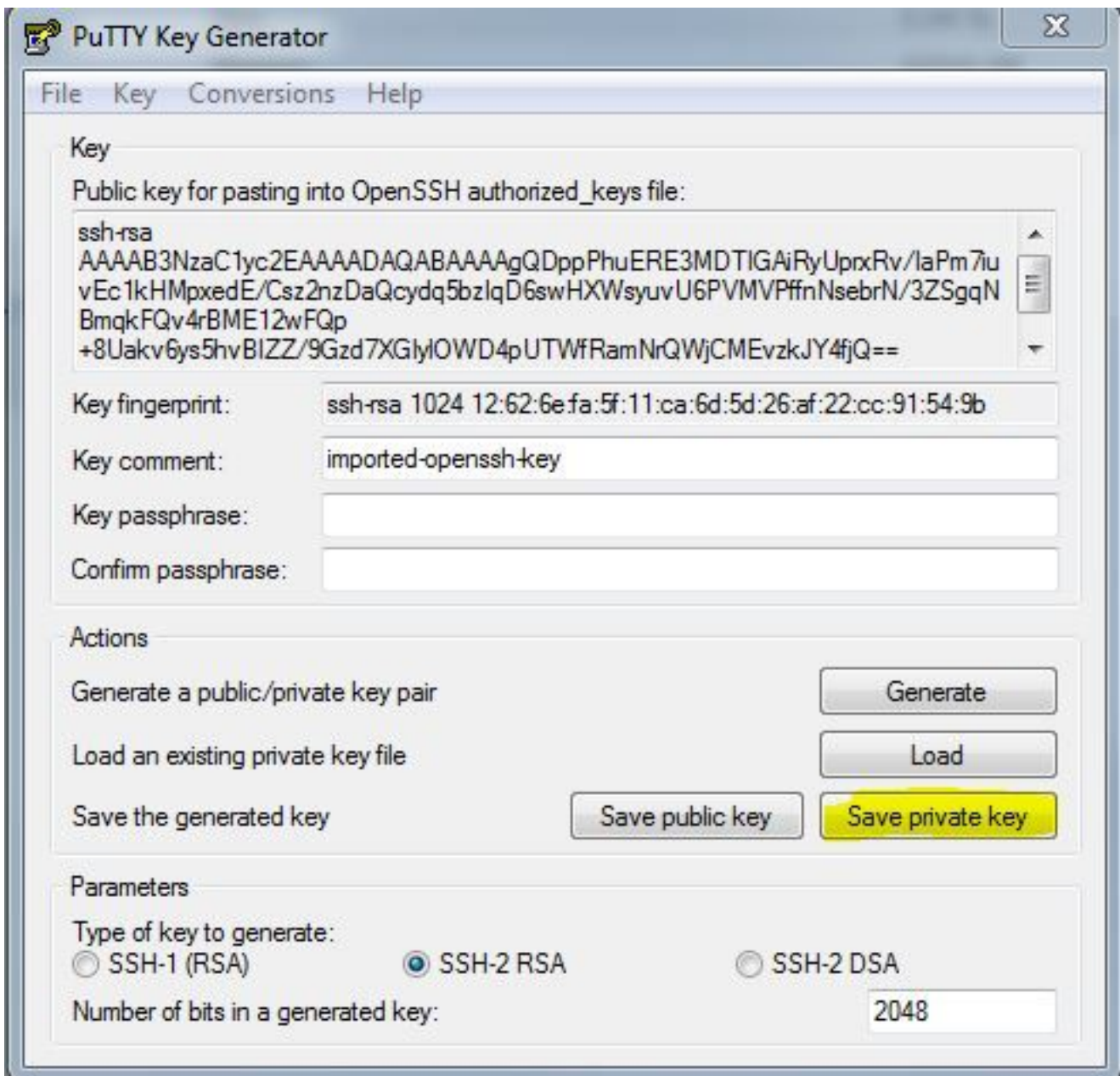


4. Copy the content of pvt key and save it on desktop of the client PC as **txt** file.

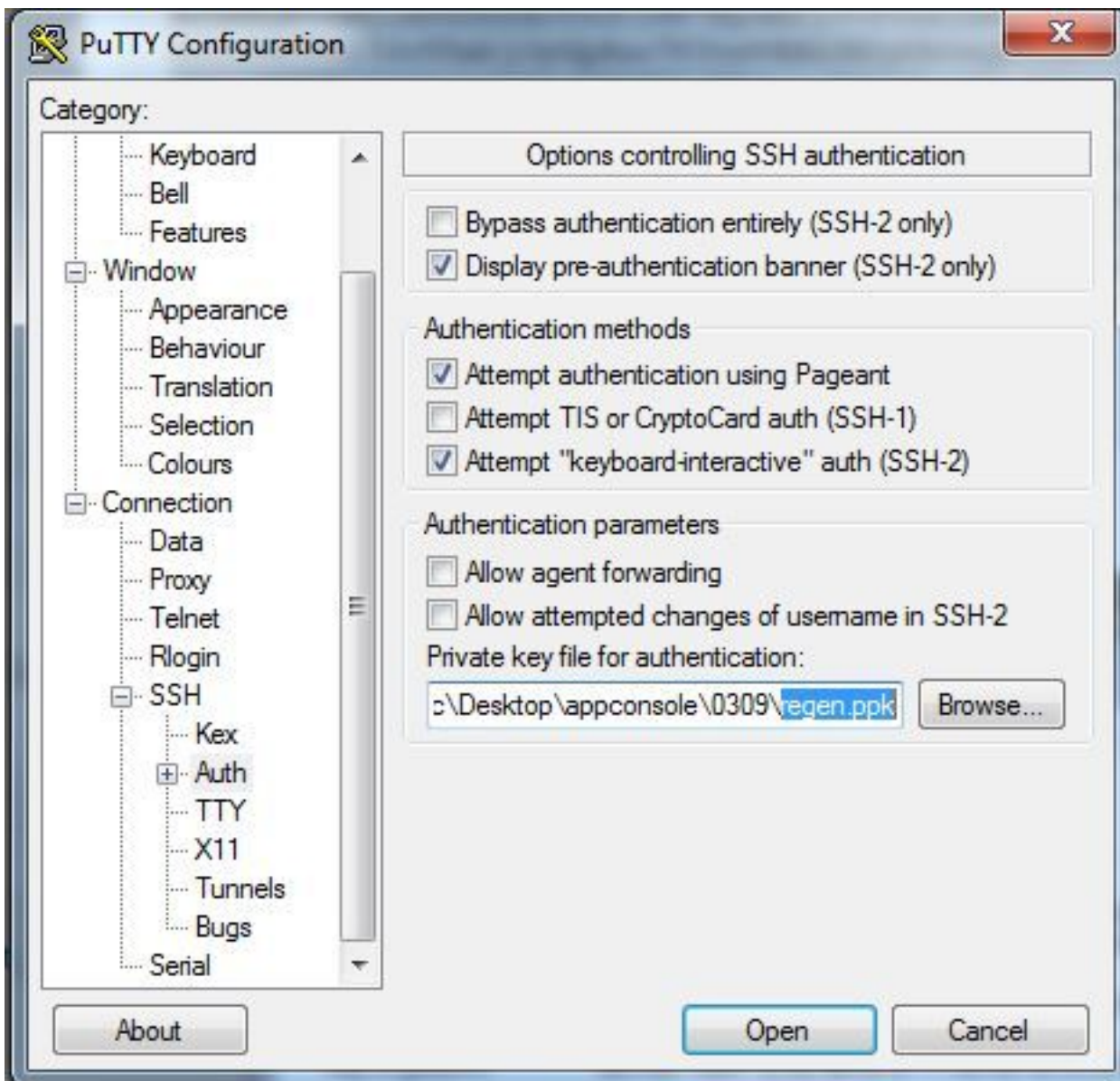
5. Run the **puttygen.exe** and import the Key you just downloaded, navigate to **Conversions and Import**.



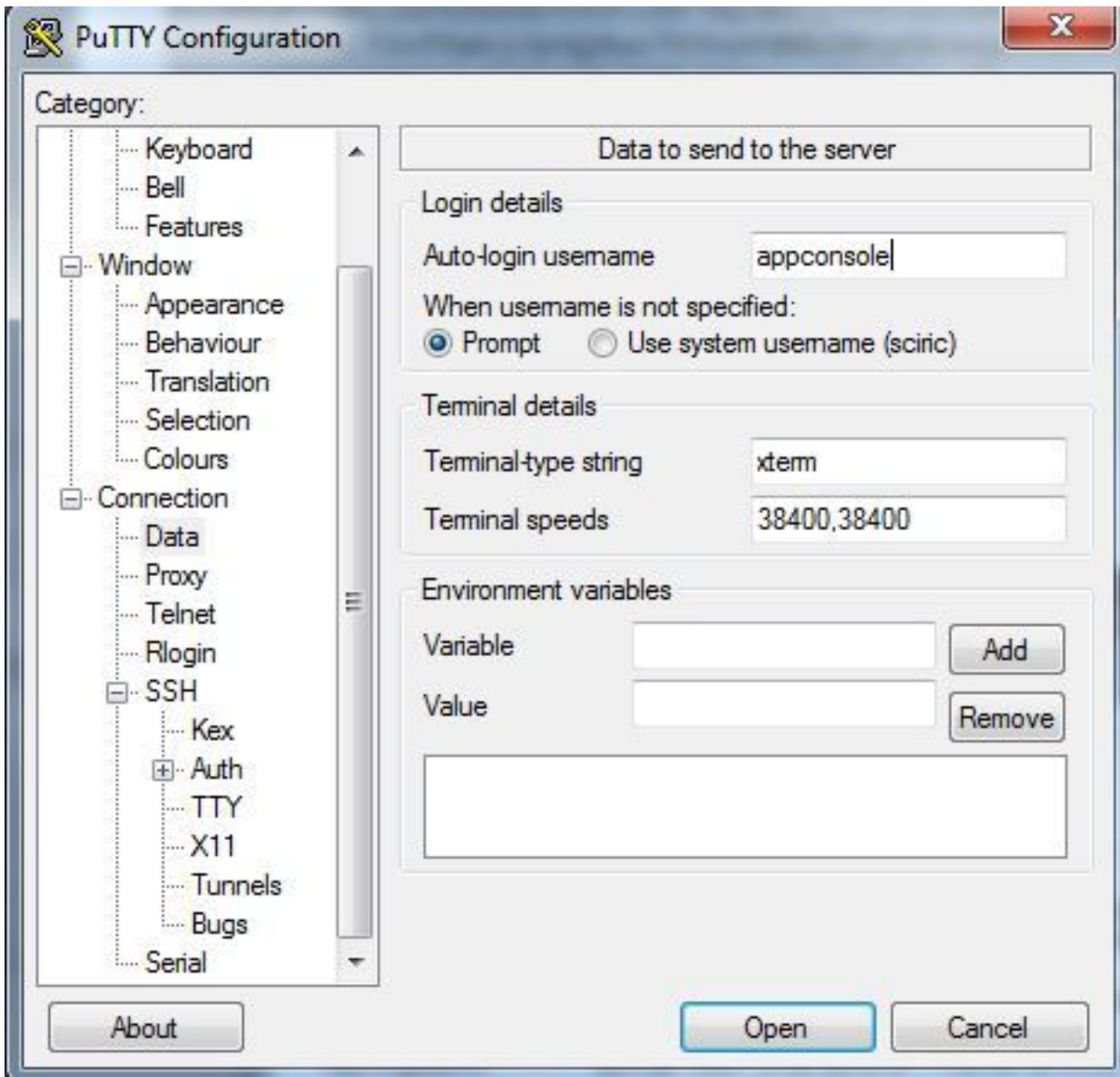
Once the file is imported, you will need to save private key, with **.ppk** extension.



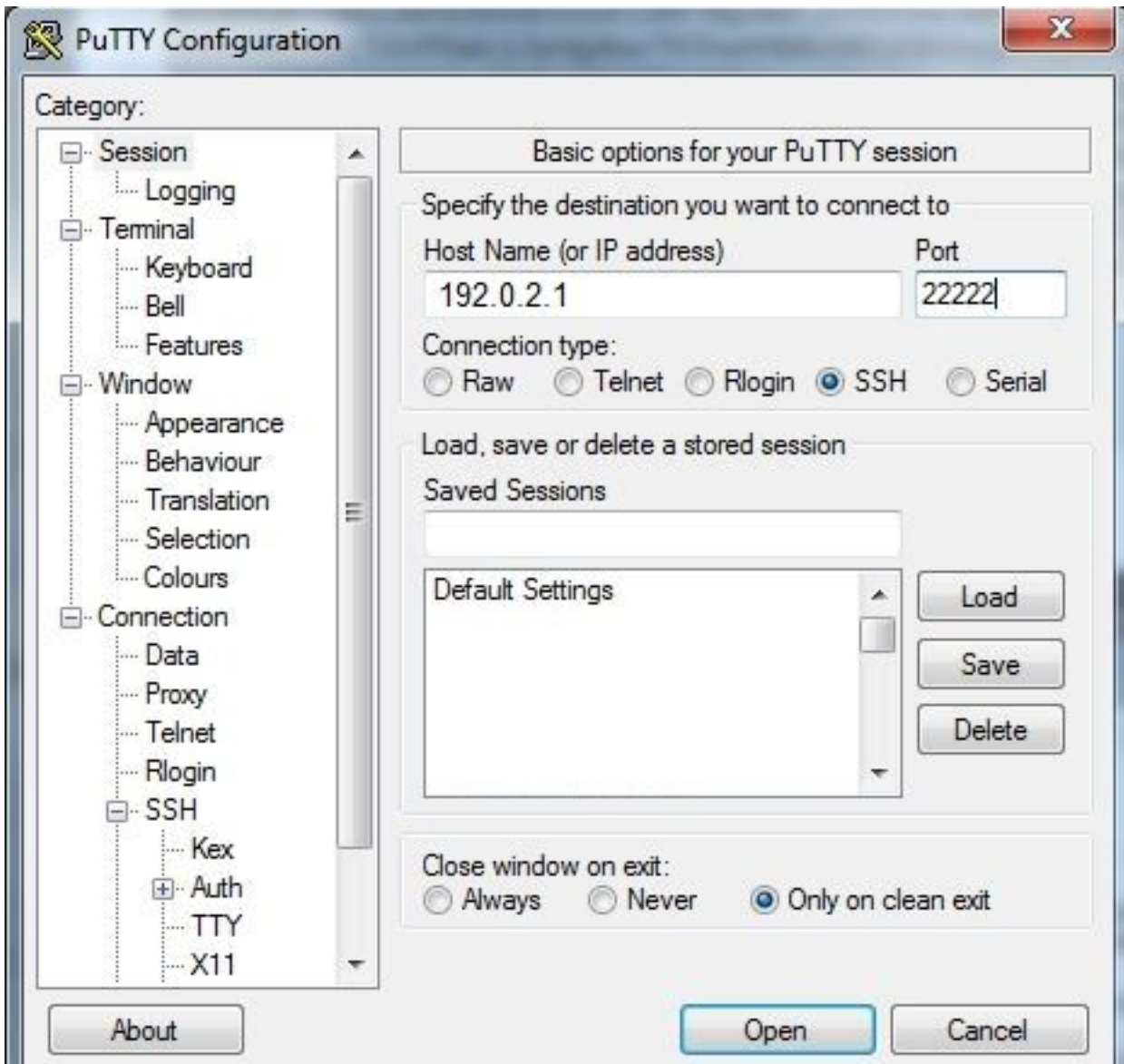
Open the **putty.exe** now for connection to be established. You will need to present **putty.exe** private key which is just generated.



Use the **appconsole** user.



Use the port number which you have previously configured for loX GOS.



You should be able to log into Console.

## Verify

Use this section in order to confirm that your configuration works properly.

Run this command on router installed with GOS.

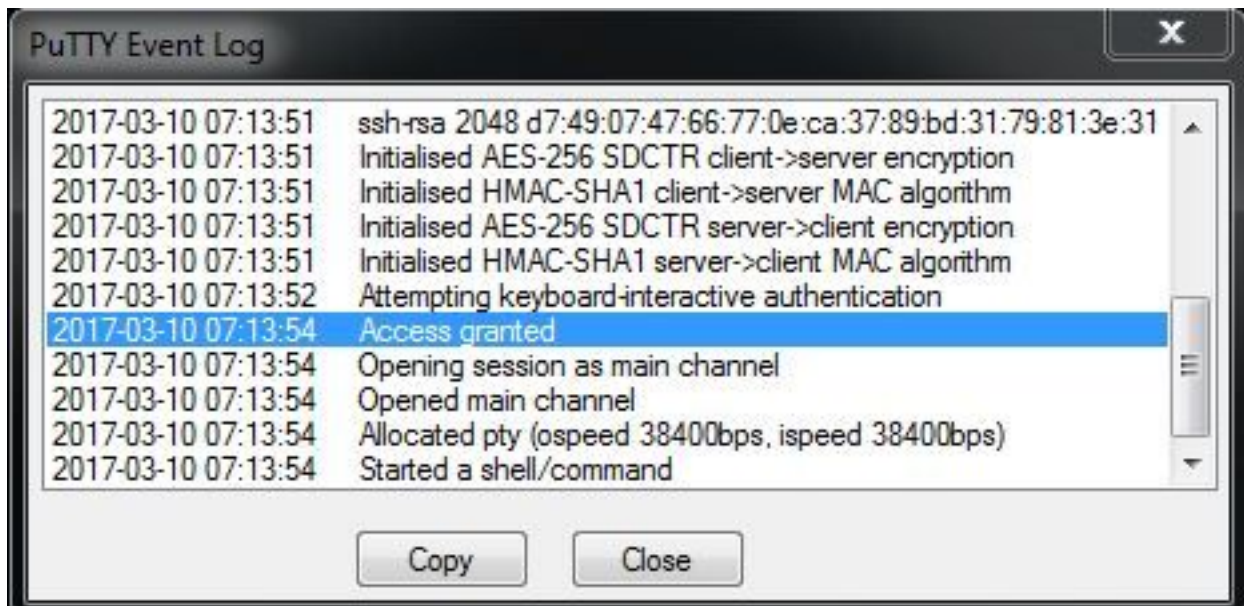
```
#sh ip nat translations
```

```
IR829GW_SJ_desk#sh ip nat translations
Pro Inside global      Inside local      Outside local     Outside global
tcp 192.0.2.1:2222     192.0.6.1:22     203.0.113.1:57551 203.0.113.1:57551
tcp 192.0.2.1:2222     192.0.6.1:22     ---               ---
tcp 192.0.2.1:8443     192.0.6.1:8443   ---               ---
```

## Troubleshoot

This section provides information you can use in order to troubleshoot your configuration.

Start troubleshooting from client side with right click on **putty.exe** and go for Event log.



To check errors download **auth.log** from IOx Local Manager. You can find on the **System Info** page in Local IOx Manager in the section **Logs**.

▼ Logs

Logging Management

Log name	Timestamp	Log Size	View
caf.log	Fri Mar 10 13:31:13 2017	26006	<a href="#">download</a>
obd.log	Fri Mar 10 13:31:08 2017	3127751	<a href="#">download</a>
dmo.log	Wed Mar 8 00:11:59 2017	636	<a href="#">download</a>
tpmc.log	Fri Mar 10 13:25:32 2017	317548	<a href="#">download</a>
messages	Wed Mar 8 19:11:46 2017	37626	<a href="#">download</a>
debug	Wed Mar 8 00:12:41 2017	5103	<a href="#">download</a>
news.notice	Wed Mar 8 00:11:15 2017	0	<a href="#">download</a>
news.err	Wed Mar 8 00:11:15 2017	0	<a href="#">download</a>
news.crit	Wed Mar 8 00:11:15 2017	0	<a href="#">download</a>
mail.err	Wed Mar 8 00:11:15 2017	0	<a href="#">download</a>
mail.warn	Wed Mar 8 00:11:15 2017	0	<a href="#">download</a>
mail.info	Wed Mar 8 00:11:15 2017	0	<a href="#">download</a>
user.log	Wed Mar 8 19:12:16 2017	4736	<a href="#">download</a>
mail.log	Wed Mar 8 00:11:15 2017	0	<a href="#">download</a>
lpr.log	Wed Mar 8 00:11:15 2017	0	<a href="#">download</a>
kern.log	Wed Mar 8 00:13:06 2017	38174	<a href="#">download</a>
daemon.log	Fri Mar 10 13:11:47 2017	13916	<a href="#">download</a>
syslog	Fri Mar 10 13:11:47 2017	57250	<a href="#">download</a>
auth.log	Fri Mar 10 13:24:32 2017	478	<a href="#">download</a>
dmesg	Wed Mar 8 00:10:29 2017	24780	<a href="#">download</a>
lastlog	Fri Mar 10 13:24:32 2017	292584	<a href="#">download</a>
wtmp	Fri Mar 10 13:24:32 2017	4992	<a href="#">download</a>
boot	Wed Mar 8 00:11:37 2017	2396	<a href="#">download</a>

```
Mar 10 13:24:32 IR829GW_SJ_desk-GOS-1 sshd[26112]:  
Accepted publickey for appconsole from 203.0.113.1 port 57551 ssh2:  
RSA SHA256:MLSv45EJfxmhd66dkZG94ZKULTaCh5DpXYsSyLyjA8k
```



Mar 10 13:24:32 IR829GW\_SJ\_desk-GOS-1 sshd[26112]:  
pam\_unix(sshd:session): session opened for user appconsole by (uid=0)