

Procedure to Create Instance with API Calls

Contents

[Introduction](#)

[Prerequisites](#)

[Requirements](#)

[Components Used](#)

[Create CCC API Key](#)

[Related Information](#)

Introduction

This document describes the procedure to create instance in Cisco CloudCenter (CCC) with the use of Application Programming Interface (API) Calls.

Prerequisites

Requirements

Cisco recommends that you have knowledge of these topics:

- Linux Interface
- Virtual Machine Environments
- Command Line Interface (CLI)

Components Used

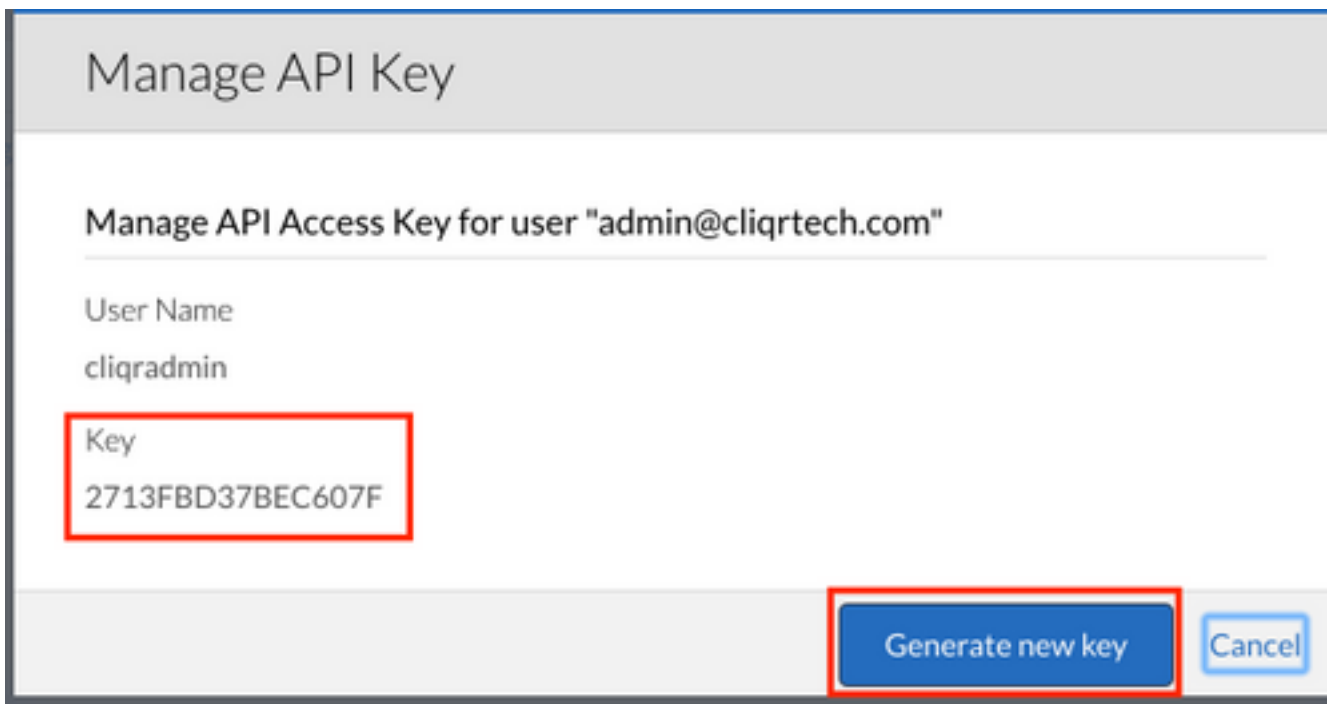
The information in this document is based on these software versions:

- CCC Version 4.x
- CloudCenter Management (CCM)
- Manage API Access Key

The information in this document was created from the devices in a specific lab environment. All of the devices used in this document started with a cleared (default) configuration. If your system is live, make sure that you understand the potential impact of any command.

Create CCC API Key

Step 1. In CCM GUI, navigate to **Admin > Users > Manage API Key** (if the user doesn't have a Key, generate a new one).



Step 2. Copy the Key, save in a text file, and click **Cancel**.

Step 3. Create a file with the Instance information, for example, **api_instance.json**:

```
{
  "name": "m3.medium",
  "description": "General purpose (m3.medium)",
  "type": "m3.medium",
  "regionId": "1",
  "costPerHour": 0.07,
  "memorySize": 3840,
  "numOfCpus": 1,
  "numOfNics": 1,
  "localStorageCount": 1,
  "localStorageSize": 4,
  "supportsCuda": false,
  "supportsSsd": false,
  "supports32Bit": false,
  "supports64Bit": true,
  "supportsHardwareProvision": false
}
```

Step 4. Identify your cloud region **Admin> Cloud > Region**:
<https://<hosts>/v1/tenants/1/clouds/1/regions/1/instanceTypes>

Note: Replace <host> with your CCM address.

Step 5. From your CLI, where **api_instance.json** file is located, run the command:

```
curl -k -X POST -H "Accept: application/json" -H "Content-Type: application/json" \
-u cliqradmin:803D197EFFC9A527 "https://<host>/v1/tenants/1/clouds/1/regions/1/instanceTypes" \
--data @api_instances.json
```

Note: Replace cliqradmin with your user.
Replace 803D197EFFC9A527 as your Key.
Replace api_isntaces.json with your file.
Replace <host> with your CCM address.

If everything is ok, the output from the CLI looks like:

```
user$ curl -k -X POST -H "Accept: application/json" -H "Content-Type: application/json" -u cliqradmin:803D197EFFF9A527 "https://<hosts>0/v1/tenants/1/clouds/1/regions/1/instanceTypes" --data @api_instances.json
```

output

```
{"id": "6", "resource": "https://10.31.127.20/v1/tenants/1/clouds/1/regions/1/instanceTypes/6", "name": "db.m2.xlarge", "description": "High-memory Extra Large DB Instance", "type": "db.m2.xlarge", "regionId": "1", "costPerHour": 0.555, "memorySize": 17100, "numOfCpus": 2, "numOfNics": 1, "localStorageCount": 0, "localStorageSize": 420, "supportsCuda": false, "supportsSsd": false, "supports32Bit": false, "supports64Bit": true, "supportsHardwareProvision": false}
```

You have a new instance in your CCM GUI:

Name	Instance Type	Price	Actions
db.m2.xlarge	db.m2.xlarge	\$0.555/hr	Edit Delete
m1.large	m1.large	\$0.175/hr	Edit Delete
c3.2xlarge	c3.2xlarge	\$0.42/hr	Edit Delete
c3.4xlarge	c3.4xlarge	\$0.84/hr	Edit Delete
cr1.8xlarge	cr1.8xlarge	\$3.5/hr	Edit Delete

Related Information

- <http://docs.cloudcenter.cisco.com/display/40API/Create+Cloud+Instance+Type>
- [Technical Support & Documentation - Cisco Systems](#)